

Qty. Description

1 **CMBE 1-44 I-U-C-A-D-A**



Note! Product picture may differ from actual product

Product No.: [98374705](#)

The Grundfos CMBE booster is a compact booster system for water supply in domestic applications. The integrated speed controller enables the CMBE booster to keep constant pressure in the pipe system. A pressure sensor monitoring changes in the water consumption signals the speed controller to change motor speed to adapt performance to the new state.

The CMBE booster is very easy to install. When the system has been connected to the pipes, it is all a matter of inserting the plug into a power supply socket, and the system is operational.

The CMBE booster consists of the following:

- CME pump with integrated frequency converter
- Five-way valve
- expansion tank
- pressure gauge

The Grundfos CMBE booster requires no external motor protection.

The MGE motor incorporates thermal protection against slow overloading and blocking (IEC 34.11: TP 211).

The Grundfos CMBE booster is mainly used for domestic and light commercial water supply or booster systems.

NB:

Suction lift: maximum 1 m, including inlet pipe pressure loss at a liquid temperature of 20 °C (not self-priming).

Controls:

Type of connector: Type I (AS/NZS 3112)

Frequency converter: Built-in

Liquid:

Pumped liquid: Water

Liquid temperature range: 0 .. 60 °C

Selected liquid temperature: 60 °C

Density: 983.2 kg/m³

Technical:

Pump speed on which pump data are based: 3776 rpm

Rated flow: 2.4 m³/h

Rated head: 28.7 m

Primary shaft seal: AVBE

Code for shaft seal: AVBE

Approvals: CE,RCM

Approvals for drinking water: WRAS,ACS

Curve tolerance: ISO9906:2012 3B

Return valve: YES

Start pressure: Integrated Frequency converter

Materials:

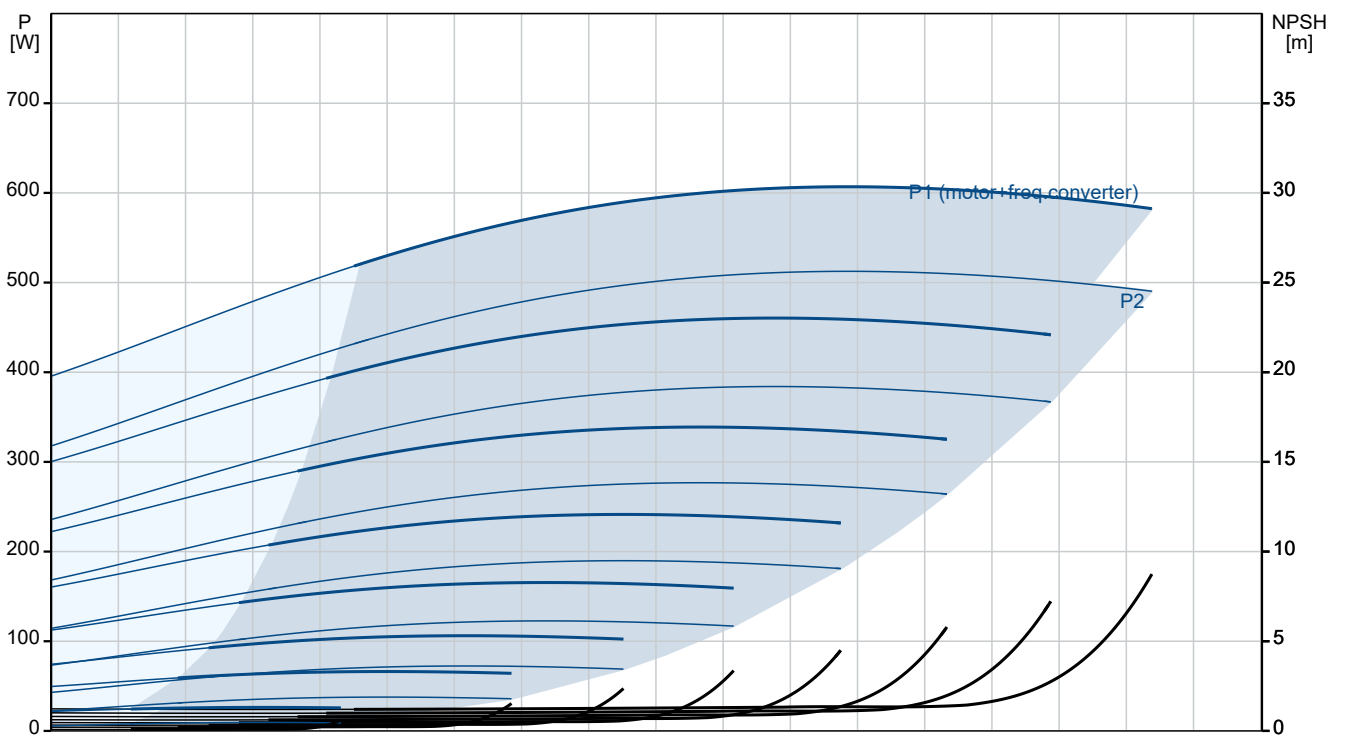
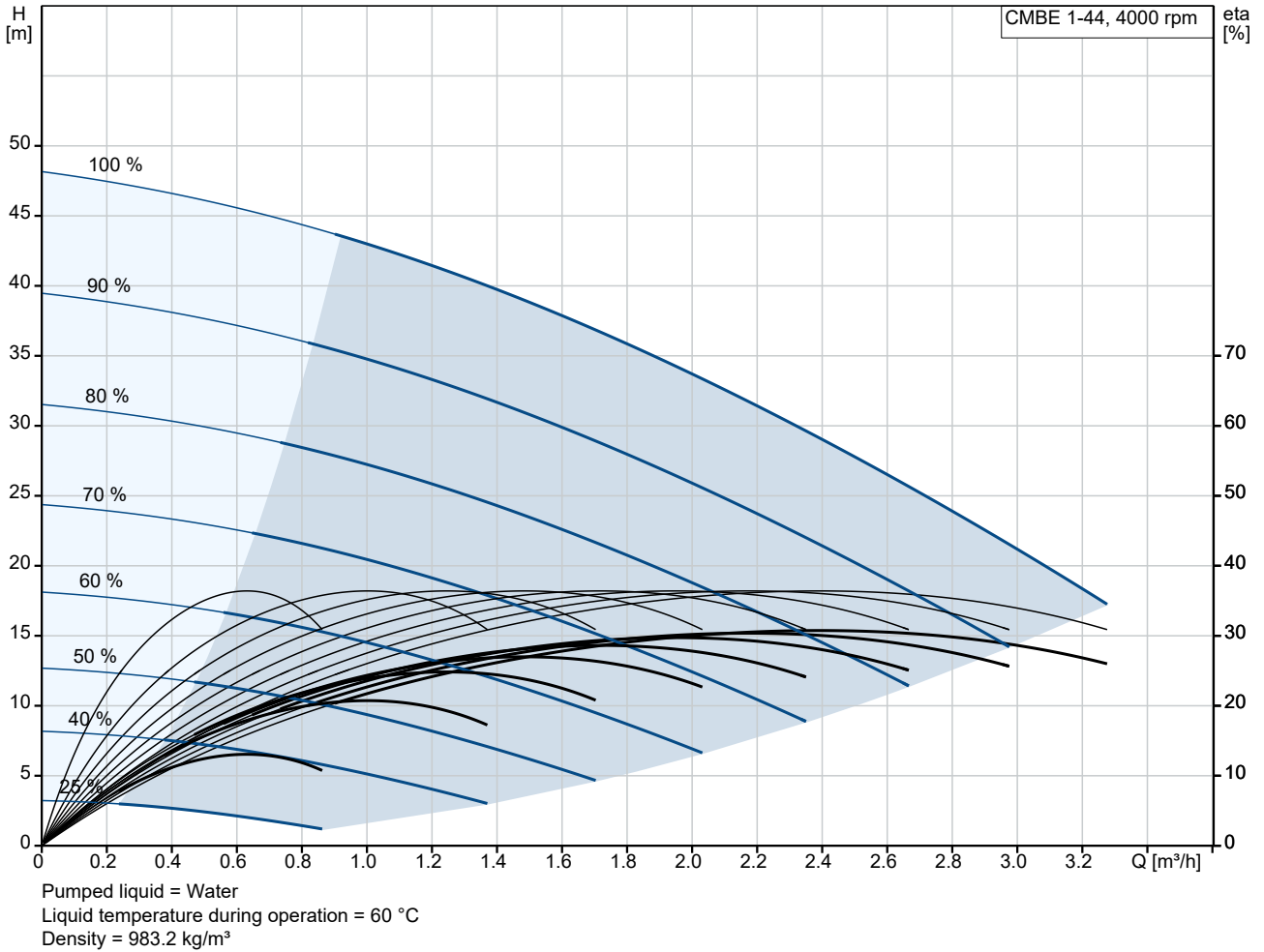
Pump housing: Stainless steel



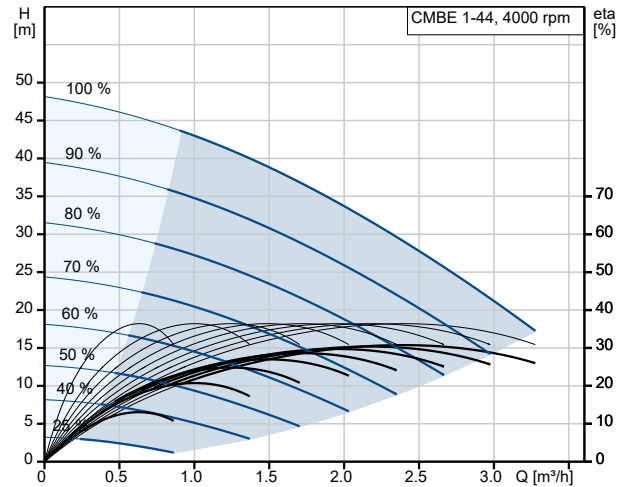
Company name: Watermatic Irrigation
Created by: Ryan McCarthy
Phone: 02 9477 5540
Email: sales@watermatic.com.au
Date:

Qty.	Description
1	<p>EN 1.4301 AISI 304 Impeller: Stainless steel EN 1.4301 AISI 304</p> <p>Installation: Maximum ambient temperature: 55 °C Maximum operating pressure: 10 bar Pipe connection standard: ISO 228-1 Type of inlet connection: Rp Type of outlet connection: Rp Size of inlet connection: 1 Size of outlet connection: 1 Pressure rating for connection: PN 10</p> <p>Electrical data: Rated power - P2: 0.55 kW Mains frequency: 50 Hz Rated voltage: 1 x 200-240 V Maximum current consumption: 3.45-2.90 A Rated speed: 360-4000 rpm Enclosure class (IEC 34-5): IP55 Insulation class (IEC 85): F Length of cable: 1.5 m Power plug: Australian plug</p> <p>Tank: Tank volume: 2 l</p> <p>Others: Net weight: 16 kg Gross weight: 26.4 kg Shipping volume: 0.168 m³ Country of origin: TW Environmental approvals: WEEE</p>

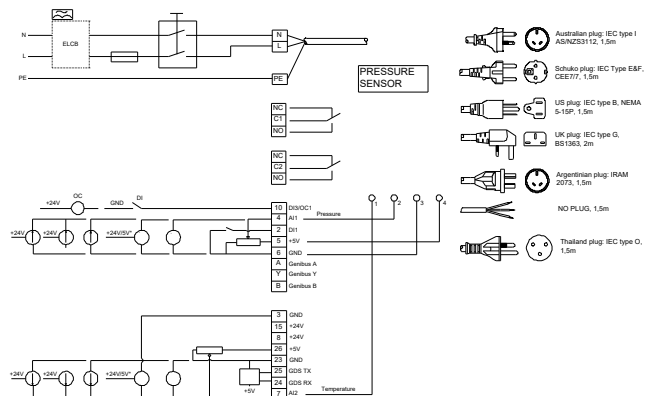
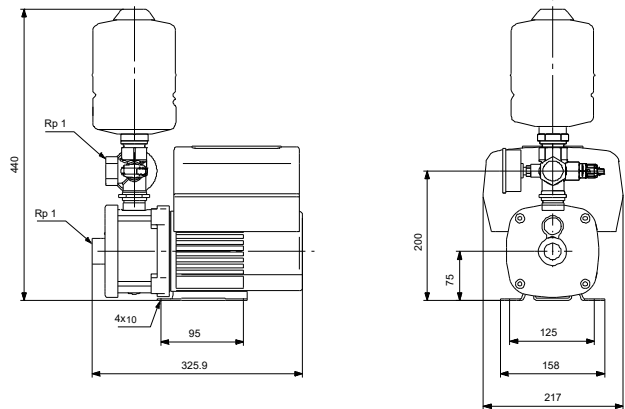
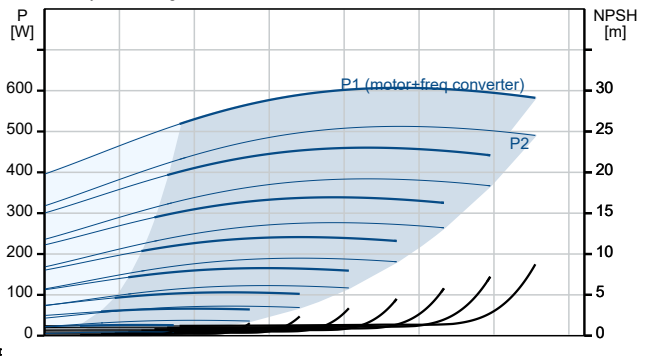
98374705 CMBE 1-44 I-U-C-A-D-A 50 Hz



Description	Value
General information:	
Product name:	CMBE 1-44 I-U-C-A-D-A
Product No:	98374705
EAN number:	5711493909453
Price:	AUD 2837
Technical:	
Pump speed on which pump data are based:	3776 rpm
Rated flow:	2.4 m ³ /h
Rated head:	28.7 m
Impellers:	3
Primary shaft seal:	AVBE
Code for shaft seal:	AVBE
Approvals:	CE,RCM
Approvals for drinking water:	WRAS,ACS
Curve tolerance:	ISO9906:2012 3B
Model:	A
Return valve:	YES
Start pressure:	Integrated Frequency converter
Materials:	
Pump housing:	Stainless steel EN 1.4301 AISI 304
Impeller:	Stainless steel EN 1.4301 AISI 304
Code for rubber:	EPDM
Installation:	
Maximum ambient temperature:	55 °C
Maximum operating pressure:	10 bar
Pipe connection standard:	ISO 228-1
Type of inlet connection:	Rp
Type of outlet connection:	Rp
Size of inlet connection:	1
Size of outlet connection:	1
Pressure rating for connection:	PN 10
Liquid:	
Pumped liquid:	Water
Liquid temperature range:	0 .. 60 °C
Selected liquid temperature:	60 °C
Density:	983.2 kg/m ³
Electrical data:	
Rated power - P2:	0.55 kW
Mains frequency:	50 Hz
Rated voltage:	1 x 200-240 V
Maximum current consumption:	3.45-2.90 A
Rated speed:	360-4000 rpm
Enclosure class (IEC 34-5):	IP55
Insulation class (IEC 85):	F
Length of cable:	1.5 m
Power plug:	Australian plug
Controls:	
Type of connector:	Type I (AS/NZS 3112)
Frequency converter:	Built-in
Tank:	
Tank volume:	2 l
Others:	



Pumped liquid = Water
 Liquid temperature during operation = 60 °C
 Density = 983.2 kg/m³

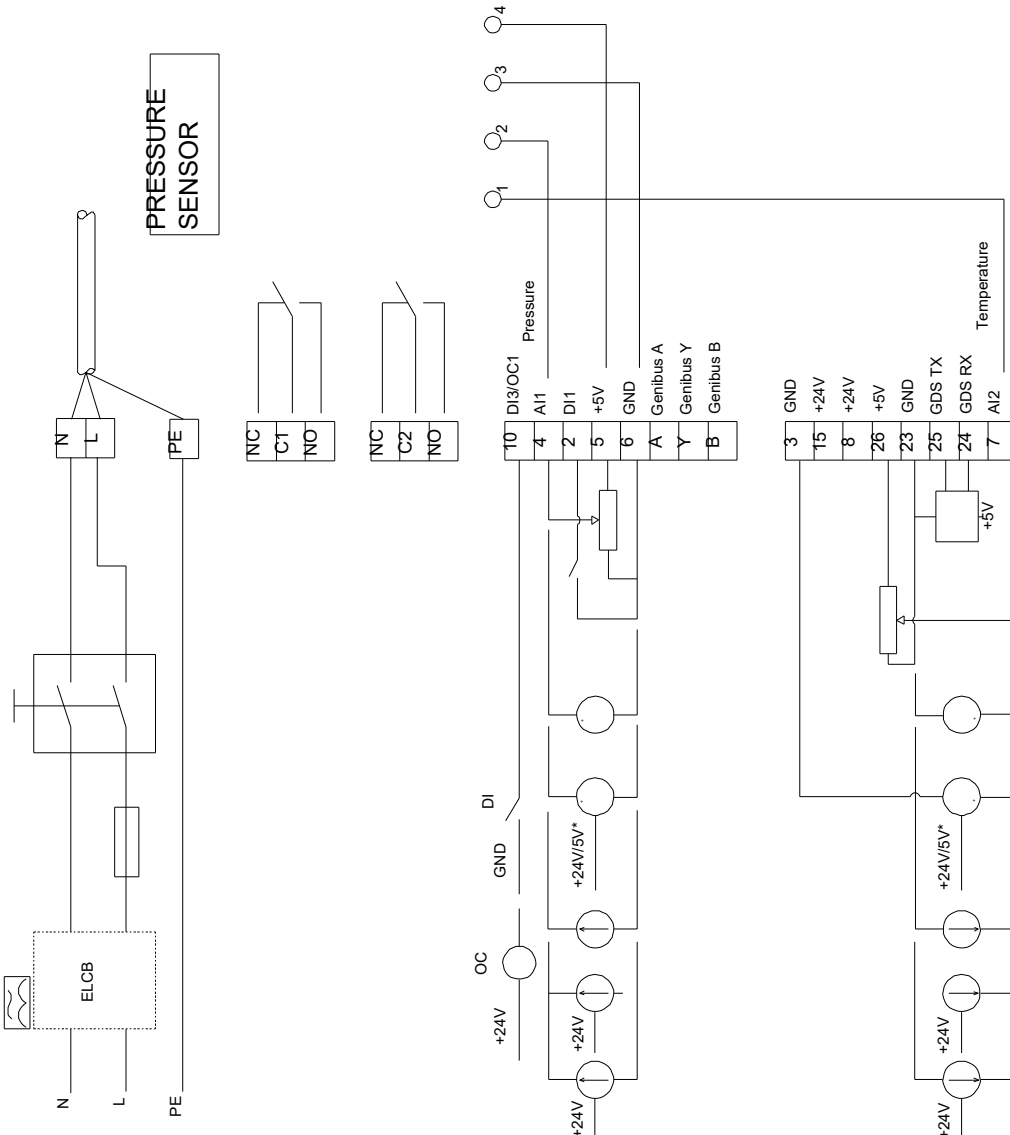
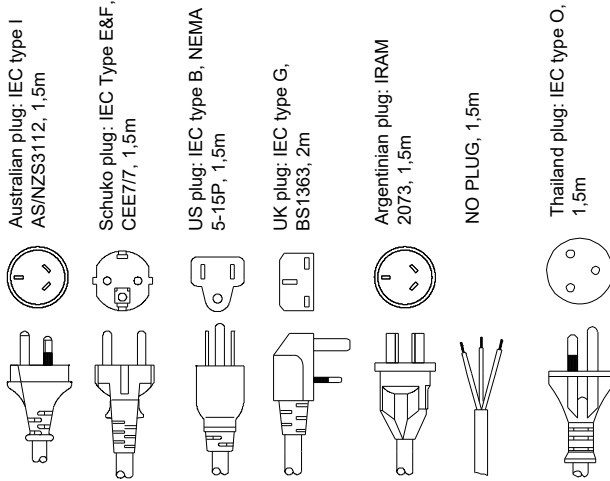




Company name: Watermatic Irrigation
Created by: Ryan McCarthy
Phone: 02 9477 5540
Email: sales@watermatic.com.au
Date:

Description	Value
Net weight:	16 kg
Gross weight:	26.4 kg
Shipping volume:	0.168 m ³
Sales region:	Australia
Config. file no:	98390431
Country of origin:	TW
Environmental approvals:	WEEE

98374705 CMBE 1-44 I-U-C-A-D-A 50 Hz



Note! All units are in [mm] unless others are stated.